

## All-Hazards Desktop Weather Alert Radio

Thank you for purchasing your All-Hazards Desktop Weather Alert Radio from **RadioShack**. It receives seven NOAA weather channels and notifies you of weather information broadcast on these channels. Please read this user's guide before installing, setting up and using your new radio.



### What's Included

Weather Alert Radio  
AC Adapter  
User's Guide  
Quick Start Guide

[www.RadioShack.com](http://www.RadioShack.com)

<b>Setup</b>	<b>4</b>
Features	4
Powering Your Weather Alert Radio	5
<b>Settings</b>	<b>6</b>
Setting Channels	6
Setting the Alert Mode	6
Setting the Missed Alert Reminder	7
Setting the Signal Loss Reminder	7
Setting the Menu Language	7
Setting Daytime and Nighttime Alert Volume	8
Setting the Backlight	8
Setting the Clock and Alarm	8
<b>Programming</b>	<b>9</b>
Programming Locations and SAME Codes	9
Programming Alerts	10
Restoring Factory Default Settings	10
<b>Using Your Radio</b>	<b>10</b>
Viewing Alerts	10
Connecting to an External System	11
Turning Audible Alerts On or Off	11
Using the Alarm and Snooze	11
NWS Alert Descriptions	12
<b>Frequent Asked Questions (FAQ)</b>	<b>14</b>
What are FIPS codes?	14
What is an alert?	14
What are undefined or unrecognized alerts?	14
How do I test my radio?	15
Multiple FIPS codes are stored, but why does the radio only respond to alerts for one area?	15
Why is there no weather broadcast when I press WEATHER/SNOOZE?	15
What is the difference between a watch and a warning?	15
How can I adapt my weather alert radio for special needs?	15

Why wouldn't I receive the test signal from NOAA? .....	16
Should the radio pick up a weather broadcast all of the time? .....	16
What does OH29M (or similar) on the display mean? .....	16
What does CHECK OP on the display mean? .....	16
<b>Additional Information.....</b>	<b>17</b>
Specifications.....	17
Care .....	17
Service and Repair .....	17
FCC Notice .....	18
Limited Warranty .....	19

## Setup

### Features

#### Alert Indicators

Red – **WARNING**, Orange – **WATCH**,  
Yellow – **ADVISORY**, Green – **READY**.

When an alert is in effect, the corresponding alert indicator flashes for 60 seconds and then lights for the duration the alert is in effect.

#### Antenna

Fully extend to receive weather broadcasts.

#### CLOCK

- Press and hold to start setting the clock.
- Press to toggle between clock and alarm time.

When alarm time shows, press and hold to start setting the alarm.



#### WEATHER/SNOOZE

Press to listen to the broadcasts, stop the alarm, or enable snooze when the alarm sounds.

#### MENU and ▲, ▼, ◀, ▶

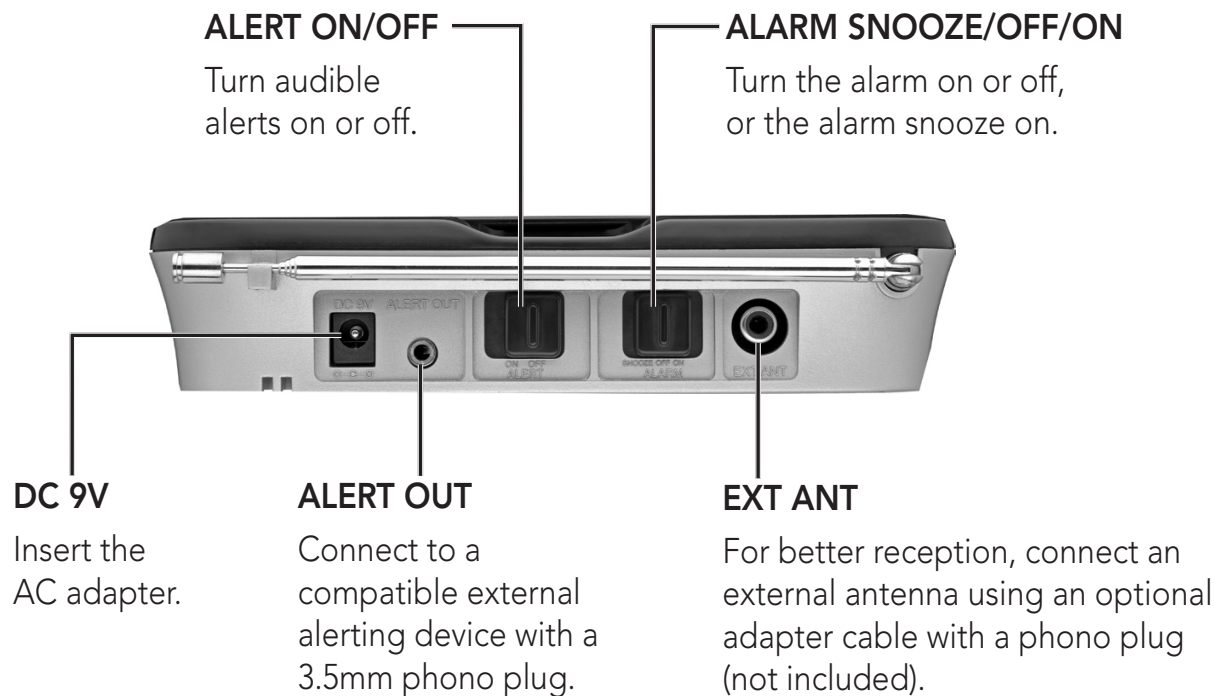
Navigate and adjust menu items.


#### SELECT

Confirm settings.



Adjust the volume during broadcasting.




 **Note:** The power source must supply 9V DC and deliver at least 300mA. Its center tip must be set to positive and its plug must fit the **DC 9V** jack. Using an adapter that does not meet these specifications could damage the radio or adapter.

## Powering Your Weather Alert Radio

Insert the AC adapter to the **DC 9V** jack to power your radio.

Install 6 AA batteries (not included) for backup power. Insert batteries as indicated by the polarity symbols (+ and –) inside.

### Battery Notes:

- When  flashes, replace the batteries.
- Use only fresh batteries of the required size and type.
- Dispose of old batteries promptly and properly. Do not burn or bury them.
- Do not mix old and new batteries, different types of batteries (standard, alkaline, or rechargeable), or rechargeable batteries of different capacities.
- If you do not plan to use your radio for a long period, remove the battery. Batteries can leak chemicals that may damage electronic parts.



## Settings


### Setting Channels

1. Press **MENU**. **SELECT CH** appears.
2. Press **SELECT** and then ▲ or ▼ to select **AUTO** (default) or **CHANNEL X** (where X is the channel number 1-7).
3. When **CHANNEL** and a channel number (1-7) appear, press **SELECT** to set that channel.

When **AUTO** appears, press **SELECT** again to automatically set to a channel. For auto setting:

- **SEARCHING CHANNEL** displays during a search, followed by the channel number (1-7).
- **WEATHER CHANNEL X AVAILABLE** displays when channel X (1-7) is detected.
- **NO CHANNEL AVAILABLE BACK TO CHANNEL X** displays when no channel is detected and the previously selected channel number X displays.

4. Press **MENU** to exit.

 **Note:** If you receive NOAA broadcasts on more than one channel, the one with the best reception may not be the best one for your location. Contact your local **RadioShack** store or the NWS for information regarding broadcast locations.



### Setting the Alert Mode

1. Press **MENU** and then ◀ or ▶ to select **ALERT MODE**.
2. Press **SELECT** and then ▲ or ▼ to select either:
  - **VOICE** – An alert tone sounds for 10 seconds, then a vocal weather broadcast turns on for 5 minutes with the alert description and duration displaying.
  - **TONE** – An alert tone sounds for 5 minutes. The alert description and duration appear on the display. To silence the alert tone, press **WEATHER/SNOOZE**.
3. Press **SELECT** again to confirm.
4. Press **MENU** to exit.



## Setting the Missed Alert Reminder

1. Press **MENU** and then ◀ or ▶ to select **ALT REMINDER**.
2. Press ▲ or ▼ to select either:
  - 🗋 – missed alert reminder enabled
  - ✖ – missed alert reminder disabled
3. Press **MENU** to exit.

### Notes:

- In tone mode, the radio beeps every 30 seconds after an alert broadcast ends until the alert effective time expires.
- In voice mode, a voice alert broadcasts for up to 5 minutes, then the radio beeps every 30 seconds until the alert effective time expires.
- Press any button to mute the reminder.

## Setting the Signal Loss Reminder

1. Press **MENU** and then ◀ or ▶ to select **SIG REMINDER**.
2. Press ▲ or ▼ to select either:
  - 🗋 – signal loss reminder enabled
  - ✖ – signal loss reminder disabled
3. Press **MENU** to exit.



### Notes:

- If a signal is lost, then **SIGNAL LOSS** appears and 📶 flashes on. The **WARNING** and **ADVISORY** alert indicators flash alternatively, and the **WATCH** indicator lights.
- Press any button to mute the reminder. If a signal is detected but is lost within 10 minutes, then reminder will not sound.

## Setting the Menu Language

1. Press **MENU** and then ◀ or ▶ to select **SET LANGUAGE**.
2. Press **SELECT** and then ▲ or ▼ to select either **ENGLISH** or **SPANISH**.
3. Press **SELECT** again to confirm.
4. Press **MENU** to exit.




## Setting Daytime and Nighttime Alert Volume

The daytime volume setting is effective from 6:00AM to 10:00PM, while the nighttime volume setting is effective from 10:00PM to 6:00AM.

1. Press **MENU** and then ◀ or ▶ to select **ALT VOL-DAY** or **ALT VOL-NIGH**.
2. Press ▲ or ▼ to adjust volume levels from 1 to 16.
3. Press **MENU** to exit.



 **Note:** Ensure that any volume you choose below the out-of-box specification is a level that will provide adequate warning for the alerts.

## Setting the Backlight

1. Press **MENU** and then ◀ or ▶ to select **BACKLIGHT?**.
2. Press **SELECT** and then ▲ or ▼ to select:
  - **AUTO** – Backlight turns on for 10 seconds when a button is pressed, an alert is received, or the AC adapter is plugged in.
  - **ON** – Backlight is always on.
  - **OFF** – Backlight does not turn on at all.
3. Press **SELECT** again to confirm.
4. Press **MENU** to exit.



## Setting the Clock and Alarm

1. To set the clock, press and hold the **CLOCK** button until the hour digits flash.  
To set the alarm, press **CLOCK**. 📻 flashes. Then press and hold **CLOCK** until the hour digits flash.
2. Use ▲, ▼, ◀, ▶ to set the hour and minute.
3. After setting, press **CLOCK** or **SELECT** to confirm and exit.



 **Note:** After setting the alarm, slide **ALARM SNOOZE/OFF/ON** to **SNOOZE** or **ON** to activate the alarm.



## Programming

### Programming Locations and SAME Codes

Your radio is pre-programmed with seven weather broadcast frequencies (channels 1-7). When you use the radio for the first time, it automatically scans for the strongest channel and receives all SAME alert signals broadcast within a radius of up to 50-mile (80-km).

1. Press **MENU** and then ◀ or ▶ to select **SAME CODE**.

2. Press **SELECT** and then ▲ or ▼ to select:

- **ALL** – Receives all SAME alert signals broadcast within a 50-mile radius.
- **MULTIPLE** – Receives a SAME alert signal only for the preprogrammed locations (up to 9).
- **SINGLE** – Receives a SAME alert signal for only one programmed location.



3. In **ALL** mode, press **SELECT** and then **MENU** to exit.

In **MULTIPLE** mode, press **SELECT** to select memory location 1. (In **SINGLE** mode only one memory location can be selected and edited.)

4. Press **SELECT** again and then ▲ or ▼ to select:

- **EDIT BY NAME** – Press **SELECT** to confirm selections and ▲ or ▼ to select the state and county.
- **EDIT BY FIPS** – Press **SELECT** to confirm selections and edits and press ▲, ▼, ◀, ▶ to edit the FIPS code if your state or county is not listed. See “What are FIPS Codes?” on page 14 for more information.
- **DELETE?** – Press **SELECT** to confirm deleting the current memory location.



**⚠ WARNING!** Your radio comes preset with FIPS codes for your state and county. Only change a FIPS code after you have verified with the NWS website that the code is correct.

5. Press ▲ or ▼ to select another memory location to edit.

6. Press **MENU** to exit.



#### Notes:

- The radio may miss alert signals while it is being programmed.

# Using Your Radio

- The radio updates the location based on the FIPS code programmed and shows the location name. If the new FIPS code does not match any county, **NOT FOUND** displays followed by the code programmed instead of a county name.

## Programming Alerts

Your radio has a large number of alerts turned on by default. For a full list of NWS alerts and default settings, see page 12.

To change alert settings:

1. Press **MENU** and then ◀ or ▶ to select **SET ALERTS?**.
2. Press **SELECT** and then ▲ or ▼ to select an alert.
3. Press **SELECT** again and then ▲ or ▼ to select **ALERT ON** or **ALERT OFF**.
4. Press **SELECT** to confirm the selection.
5. Press **MENU** to exit.



## Restoring Factory Default Settings

1. Unplug the AC adapter and remove the batteries.
2. Press and hold **WEATHER/SNOOZE**, and at the same time plug the AC adapter in or install the batteries. When **USER SETUP** displays, release **WEATHER/SNOOZE**.
3. Press **MENU** to clear the memory and restore factory settings. **DEFAULT** displays. Wait 5 to 10 seconds until **USER SETUP** displays again.
4. Unplug and then plug the AC adapter (or remove the batteries and then install them). Your radio is restored to factory default settings.



# Using Your Radio

## Viewing Alerts


When an alert is received, the alert description displays. If multiple alerts are received, press ◀ to view them in the order they were received. The description of a newly received alert displays immediately. Your radio can memorize up to four different alerts for you to cycle through. For example, if three alerts are received, they display in turn in this way:

Flash Flood → 3H15M → 3-EVENT

Hurricane → 0H15M → 3-EVENT

Fire → 6H00M → 3-EVENT

Where 3H15M means 3 hours 15 minutes, the forecast duration of the weather condition; 3-EVENT means three weather alerts are received.

 **Note:** While reviewing warning alerts, if you do not press ◀ or ▶ for 30 seconds, the description of the alert last received displays.

## Connecting to an External System

Connect a compatible external alerting device such as a pillow shaker and a flasher to the **ALERT OUT** jack. The external alert device can be up to 200mA with a 3.5mm phono plug (not supplied).

Your radio passes alerts to the external device. The alert turns off automatically when the alert period ends or is manually reset by pressing **WEATHER/SNOOZE** twice.



## Turning Audible Alerts On or Off

Alerts are always shown on the display, but they can be audible or silent.

- To enable audible alerts, slide **ALERT ON/OFF** to **ON**. 🗣️ displays.
- To disable audible alerts, slide **ALERT ON/OFF** to **OFF**. 🚫 displays.

 **Note:** If you slide **ALERT ON/OFF** to **OFF** before the radio is powered on, the radio still operates in **ALERT ON** mode. If this happens, slide **ALERT ON/OFF** to **ON** and then **OFF** again with the power on to disable audible alerts.

## Using the Alarm and Snooze

You must set the alarm time before enabling the alarm. To enable the alarm, slide **ALARM SNOOZE/OFF/ON** to **ON** or **SNOOZE** (🔔 displays).

When the alarm sounds, press **WEATHER/SNOOZE** to stop it. In snooze mode, press **WEATHER/SNOOZE** to silence the alarm for 10 minutes. When the alarm is not wanted, slide **ALARM SNOOZE/OFF/ON** to **OFF** to disable it.

 **Note:** During a broadcast, the alarm sounds for 5 seconds.

## NWS Alert Descriptions

Event Code	Level	Default
Administrative message	Advisory	Off
Avalanche Watch	Watch	On
Avalanche Warning	Warning	On
Biological Hazard Warning	Warning	On*
Boil Water Warning	Warning	On
Blizzard Warning	Warning	On
Child Abduction Emergency	Advisory	On
Civil Danger Warning	Warning	On*
Civil Emergency Message	Warning	On*
Coastal Flood Watch	Watch	On
Coastal Flood Warning	Warning	On
Chemical Hazard Warning	Warning	On*
Contaminated Water Warning	Warning	On*
Dam Watch	Watch	On
Dam Break Warning	Warning	On*
Contagious Disease Warning	Warning	On*
Practice/Demo	Advisory	Off
Dust Storm Warning	Warning	On
Emergency Action Notification	Warning	On*
Emergency Action Termination	Advisory	On*
Earthquake Warning	Warning	On*
Immediate Evacuation	Warning	On*
Evacuation Watch	Watch	On
Food Contamination Warning	Warning	On*
Flash Flood Watch	Watch	On
Flash Flood Statement	Advisory	On
Flash Flood Warning	Warning	On
Flood Watch	Watch	On
Flood Statement	Advisory	On
Flood Warning	Warning	On
Fire Warning	Warning	On
Flash Freeze Warning	Warning	On
Freeze Warning	Warning	On
Hurricane Statement	Advisory	On
Hazardous Materials Warning	Warning	On*
Hurricane Watch	Watch	On
Hurricane Warning	Warning	On*
High Wind Watch	Watch	On
High Wind Warning	Warning	On
Iceberg Warning	Warning	On
Industrial Fire Warning	Warning	On*
Local Area Emergency	Advisory	On*

Event Code	Level	Default
Law Enforcement Warning	Warning	On*
Land Slide Warning	Warning	On*
National Audible Test	Advisory	Off
National Information Center	Advisory	Off
Network Notification Message	Advisory	Off
National Periodic Test	Advisory	Off
National Silent Test	Advisory	Off
Nuclear Power Plant Warning	Warning	On*
Power Outage Advisory	Advisory	On
Radiological Hazard Warning	Warning	On*
Required Monthly Test	Advisory	Off†
Required Weekly Test	Advisory	Off†
Special Marine Warning	Warning	On
Special Weather Statement	Advisory	On
Shelter In-Place Warning	Warning	On*
Severe Thunderstorm Watch	Watch	On
Severe Thunderstorm Warning	Warning	On
Severe Weather Statement	Advisory	On
Tornado Watch	Watch	On
911 Telephone Outage Emergency	Advisory	On
Tornado Warning	Warning	On*
Tropical Storm Watch	Watch	On
Tropical Storm Warning	Warning	On*
Tsunami Watch	Watch	On*
Tsunami Warning	Warning	On*
Transmitter Backup On	Advisory	Off
Transmitter Carrier Off	Advisory	Off
Transmitter Carrier On	Advisory	Off
Transmitter Primary On	Advisory	Off
Volcano Warning	Warning	On*
Wild Fire Watch	Watch	On
Wild Fire Warning	Warning	On*
Winter Storm Watch	Watch	On
Winter Storm Warning	Warning	On
Unrecognized Watch	Watch	On
Unrecognized Emergency	Advisory	On
Unrecognized Statement	Advisory	On
Unrecognized Warning	Warning	On



## Notes:

- The \* (asterisk) denotes that an alert is enabled permanently and cannot be selected and disabled.
- The † denotes the test alerts you can use to ensure your area's broadcasts are being sent.

## Frequent Asked Questions (FAQ)

### What are FIPS codes?

Your weather alert radio can receive all SAME alert signals broadcast within a radius of up to 50-miles (80-km). To receive alerts about weather occurring only in particular counties within that area, you can program up to nine locations into your radio and the FIPS codes are automatically set into memory. You can then avoid hearing an alert that applies to an area within a 50-mile radius, but not necessarily to your county, parish, or region.

For the purpose of broadcasting weather information, the National Weather Service (NWS) has divided the United States into areas by state and county (or parish, where applicable) and then assigned a 6-digit FIPS code to each area. For example, the code for Tarrant County, Texas, is 048439.

The first digit of a FIPS code identifies the county subdivision, the next two digits identify the state, and the last three digits identify the county or parish.

**Obtaining FIPS Codes:** To obtain the FIPS codes, contact your local **RadioShack** store or call the NWS toll free at 1-888-NWR-SAME (1-888-697-7263).

You can also visit the NWS website: <http://www.nws.noaa.gov/nwr/indexnw.htm>

### What is an alert?

Your radio is preset to receive warnings, watches, and advisories from the NWS. When an alert is received, a voice or tone alert sounds, and the alert description and duration appear on the display. Alert descriptions are based on a list of specific weather alert types published by NWS. For a list of alert descriptions displayed on your Weather Alert Radio, refer to "**NWS Alert Descriptions**" on page 12.

 **Note:** *If severe weather is imminent, do not wait for an alert tone.*

### What are undefined or unrecognized alerts?

The NWS occasionally broadcasts weather information intended for commercial or other non-public use, or creates and broadcasts new alert types. If a signal for a new alert type is received and the alert is turned on, **UNRECOGNIZED** and the alert description (warning, watch, or advisory) displays.

## How do I test my radio?

The NWS broadcast test alerts every week on Wednesday between 11 AM and 1 PM. To find out the specific test schedule in your area, contact your local NOAA (National Oceanic and Atmospheric Administration) and, NWS. These offices are listed in most telephone books or online at <http://www.nws.noaa.gov/nwr/indexnw.htm>. These test alerts are off by default. To change your alert settings see "**Programming Alerts**" on page 10.

**Important:** Clear reception of a weather broadcast signal does not guarantee an emergency alert will trigger your radio's alert function. Your Hazard Alert Radio's alert function will only be triggered by an emergency alert when you program the weather radio with the FIPS code for your area.

## Multiple FIPS codes are stored, but why does the radio only respond to alerts for one area?

Make sure your radio is set to MULTIPLE mode. See "**Programming Locations and SAME Codes**" on page 9.

## Why is there no weather broadcast when I press WEATHER/SNOOZE?

- Make sure the telescoping antenna is fully extended.
- Make sure the radio is set to the weather channel broadcast in your area. See "**Setting Channels**" on page 6.

## What is the difference between a watch and a warning?

Your radio is preset to receive warnings, watches and advisories from the NWS.

- A watch alerts you to potential severe weather approaching your area. It doesn't mean severe weather will occur, but that the right conditions exist which could lead to severe storms. You should be prepared for the deteriorating weather.
- A warning states the severe weather is imminent or present in your vicinity. You should immediately take precautions to protect yourself and your family.

## How can I adapt my weather alert radio for special needs?

You can use your weather alert radio with a universal interface and modules to trigger a siren and/or flash particular lights when an alert is received. For detailed information, see "**Connecting to an External System**" on page 11.



# Frequent Asked Questions

## Why wouldn't I receive the test signal from NOAA?

By default your weather alert radio does not receive test alerts. For information about turning on test alerts, see "**Programming Alerts**" on page 10.

When programming alerts, keep in mind that although NOAA is a national organization, test alerts are sent locally. Some local services send test signals out once a month instead of once a week (Required Monthly or Required Weekly Test). Other local services do not send out any test alerts other than seasonal alerts (hurricane or tornado season, etc.). Check with your local weather service to find out their testing frequency.

If you are on the right frequency and a signal was sent, you might need to try a different location for the radio, such as near a window and away from any other audio equipment, or you may need an external antenna.

## Should the radio pick up a weather broadcast all of the time?

The weather service broadcasts constantly. If you cannot pick up any weather broadcasts, check the NWS website to be sure you are on the right frequency. If you are on the correct frequency and do not get a signal, try moving your weather radio. If you are in a metal building or in a weak signal area, you may need to use an external antenna. See page 5 for more information about setting up an external antenna.

## What does 0H29M (or similar) on the display mean?

Your radio tracks an alert's effective time. For example, "0H29M" indicates that 0 hours and 29 minutes remain until the current alert expires.

## What does CHECK OP on the display mean?

CHECK OP (Check Operation) means your radio has not received any type of SAME alert signal (include test or demo signals) for about 10 days.

Make sure the antenna is fully extended and the stored location is correct. See "**Programming Locations and SAME Codes**" on page 9 for more information.

## Additional Information

### Specifications

Channel 1 .....	162.400MHz
Channel 2 .....	162.425MHz
Channel 3 .....	162.450MHz
Channel 4 .....	162.475MHz
Channel 5 .....	162.500MHz
Channel 6 .....	162.525MHz
Channel 7 .....	162.550MHz
Receiving sensitivity (at 12dB SINAD) .....	0.3µV
FIPS codes sensitivity @ ±3 KHz deviation / 90% success rate .....	0.3µV
Signal to noise ratio .....	45dB
Channel selectivity .....	+/-25kHz, 50dB
Dimensions (W×H×D) .....	7⅞ × 6 × 1½ inch (181 × 152 × 38 mm)
Weight (not including batteries) .....	13.9 oz (393 g)
Alert out port rating .....	200mA, tip positive

Specifications are subject to change and improvement without notice. Actual product may vary from the images found in this document.

### Care

Keep the Weather Alert Radio dry. If it gets wet, wipe it dry immediately. Use and store the radio only in normal temperature environments. Handle the radio carefully; do not drop it. Keep the radio away from dust and dirt, and wipe it with a damp cloth occasionally to keep it looking new.

### Service and Repair

If your Weather Alert Radio is not performing as it should, take it to your local **RadioShack** store for assistance. To locate your nearest **RadioShack**, use the store locator feature at [www.radioshack.com](http://www.radioshack.com), or call 1-8800-The Shack (1-8800-8843-7422) and follow the menu options.

Modifying or tampering with the radio's internal components can cause a malfunction and might invalidate its warranty and void your FCC authorization to operate it.

## FCC Notice

This equipment has been tested and found to comply with the limits for a Class B digital device, pursuant to Part 15 of the FCC Rules. These limits are designed to provide reasonable protection against harmful interference in a residential installation. This equipment generates, uses, and can radiate radio frequency energy and, if not installed and used in accordance with the instructions, may cause harmful interference to radio communications. However, there is no guarantee that interference will not occur in a particular installation. If this equipment does cause harmful interference to radio or television reception, which can be determined by turning the equipment off and on, the user is encouraged to try to correct the interference by one or more of the following measures:

- Reorient or relocate the receiving antenna.
- Increase the separation between the equipment and receiver.
- Connect the equipment into an outlet on a circuit different from that to which the receiver is connected.
- Consult your local **RadioShack** store or an experienced radio/TV technician for help.

If you cannot eliminate the interference, the FCC requires that you stop using your equipment. Changes or modifications not expressly approved by **RadioShack** may cause interference and void the user's authority to operate the equipment.

This device complies with Part 15 of the FCC rules. Operation is subject to the following two conditions: (1) This device may not cause harmful interference, and (2) This device must accept any interference received, including interference that may cause undesired operation.



Product	All-Hazards Desktop Weather Alert Radio
Model	12-521
Responsible Party	RadioShack 300 RadioShack Circle Fort Worth, TX 76102
Phone	817-415-3200

### Limited Warranty

**RadioShack** warrants this product against defects in materials and workmanship under normal use by the original purchaser for **one (1) year** after the date of purchase from a **RadioShack**-owned store or an authorized **RadioShack** franchisee or dealer.

**RADIOSHACK** MAKES NO OTHER EXPRESS WARRANTIES.

This warranty does not cover: (a) damage or failure caused by or attributable to abuse, misuse, failure to follow instructions, improper installation or maintenance, alteration, accident, Acts of God (such as floods or lightning), or excess voltage or current; (b) improper or incorrectly performed repairs by persons who are not a **RadioShack** Authorized Service Facility; (c) consumables such as fuses or batteries; (d) ordinary wear and tear or cosmetic damage; (e) transportation, shipping or insurance costs; (f) costs of product removal, installation, set-up service, adjustment or reinstallation; and (g) claims by persons other than the original purchaser.

Should a problem occur that is covered by this warranty, take the product and the **RadioShack** sales receipt as proof of purchase date to any **RadioShack** store in the U.S. **RadioShack** will, at its option, unless otherwise provided by law: (a) repair the product without charge for parts and labor; (b) replace the product with the same or a comparable product; or (c) refund the purchase price. All replaced parts and products, and products on which a refund is made, become the property of **RadioShack**. New or reconditioned parts and products may be used in the performance of warranty service. Repaired or replaced parts and products are warranted for the remainder of the original warranty period. You will be charged for repair or replacement of the product made after the expiration of the warranty period.

**RADIOSHACK** EXPRESSLY DISCLAIMS ALL WARRANTIES AND CONDITIONS NOT STATED IN THIS LIMITED WARRANTY. ANY IMPLIED WARRANTIES THAT MAY BE IMPOSED BY LAW, INCLUDING THE IMPLIED WARRANTY OF MERCHANTABILITY AND, IF APPLICABLE, THE IMPLIED WARRANTY OF FITNESS FOR A PARTICULAR PURPOSE, SHALL EXPIRE ON THE EXPIRATION OF THE STATED WARRANTY PERIOD.

EXCEPT AS DESCRIBED ABOVE, **RADIOSHACK** SHALL HAVE NO LIABILITY OR RESPONSIBILITY TO THE PURCHASER OF THE PRODUCT OR ANY OTHER PERSON OR ENTITY WITH RESPECT TO ANY LIABILITY, LOSS OR DAMAGE CAUSED DIRECTLY OR INDIRECTLY BY USE OR PERFORMANCE OF THE PRODUCT OR ARISING OUT OF ANY BREACH OF THIS WARRANTY, INCLUDING, BUT NOT LIMITED TO, ANY DAMAGES RESULTING FROM INCONVENIENCE AND ANY LOSS OF TIME, DATA, PROPERTY, REVENUE, OR PROFIT AND ANY INDIRECT, SPECIAL, INCIDENTAL, OR CONSEQUENTIAL DAMAGES, EVEN IF **RADIOSHACK** HAS BEEN ADVISED OF THE POSSIBILITY OF SUCH DAMAGES.

Some States do not allow limitations on how long an implied warranty lasts or the exclusion or limitation of incidental or consequential damages, so the above limitations or exclusions may not apply to you. This warranty gives you specific legal rights, and you may also have other rights which vary from State to State. You may contact **RadioShack** at:

**RadioShack** Customer Relations  
300 RadioShack Circle, Fort Worth, TX 76102

04/08



Protect the environment. Go to [E-CyclingCentral.com](http://E-CyclingCentral.com) to find a recycling location near you.